



BASE4

BASE4
3858 GLADES ROAD, #31
BOCA RATON, FLORIDA 33434
1.712.012 BASE4 www.base-4.com

SEAL



GARRY VERMAAS, PhD, PE
2015.08.05
9011 EDGEWATER BEND
PARKLAND, FLORIDA, 33076



ISSUE:

Issued for Permit
08.05.2016

PROJECT: 16-018

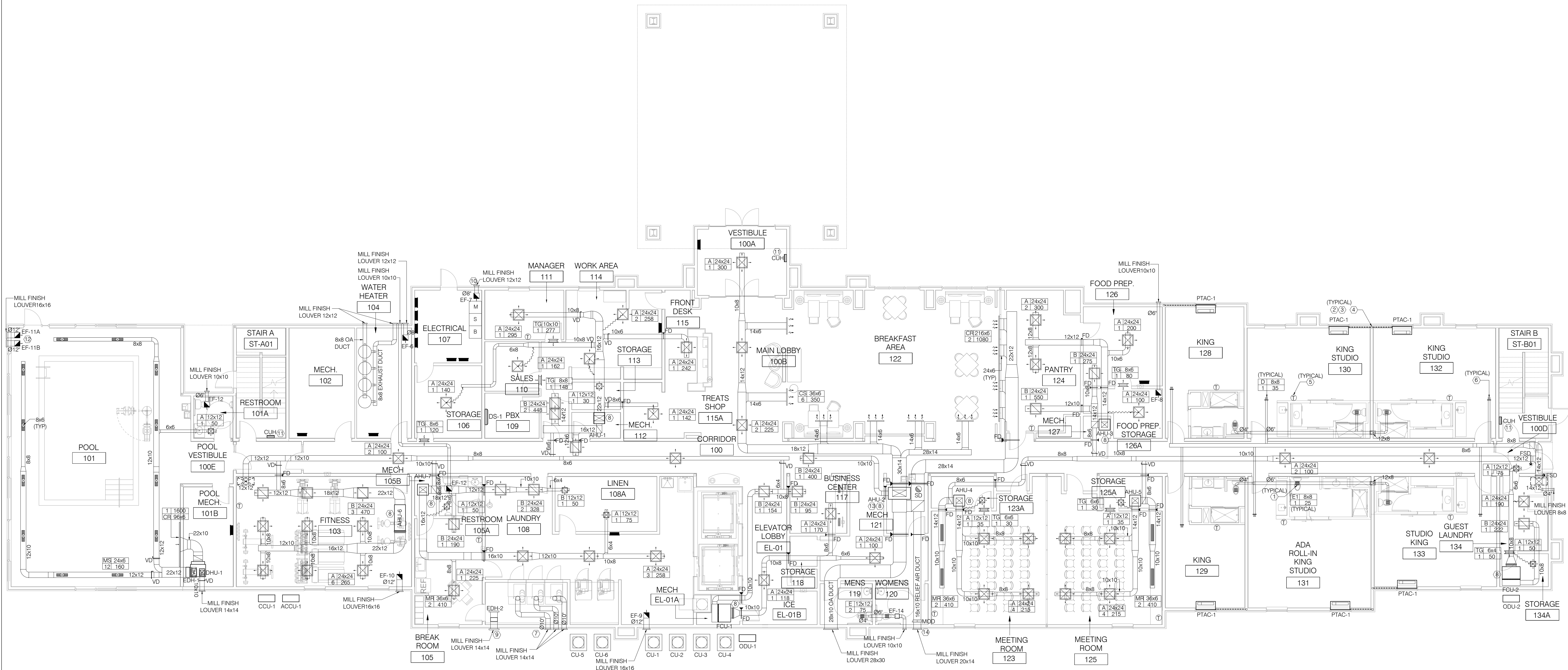
Hampton Inn & Suites

New Stanton, PA 15672

OWNER:

Stanton Hospitality LLC

52 Blueberry Lane,
Grove City, PA 16127



01 FIRST FLOOR MECHANICAL PLAN

SCALE: 1/8" = 1'-0"

GENERAL MECHANICAL NOTES

- CONDENSING UNITS TO BE MOUNTED AND LEVELLED ON PRE-FABRICATED CONCRETE PADS.
- SUPPLY RUNOUTS TO DIFFUSERS SHALL BE THE SAME SIZE AS THE EQUIPMENT CONNECTION UNLESS OTHERWISE NOTED.
- THE FIRST TEN FEET OF THE RETURN DUCT UPSTREAM OF AIR HANDLING UNITS AND FAN COIL UNITS SHALL HAVE 1" INTERNAL LINING. DIMENSIONS SHOWN ARE CLEARANCES.
- REFER TO MANUFACTURER'S RECOMMENDATIONS FOR REFRIGERANT PIPE SIZING.
- THERMOSTATS FOR ALL PTACS, RTUS AND DX SYSTEMS SHALL BE TELKONET ECOSMART SYSTEM. PLEASE CONTACT CHAD BURROW AT 414-302-2302 OR CHAD@WJTELKONET.COM. SEE WWW.TELKONET.COM FOR MORE INFORMATION. APPROVED EQUALS MUST BE APPROVED BY ECR AND FRANCHISE.
- ALL THERMOSTAT SHALL HAVE A 5' DEADBAND WITH AUTOMATIC CONTROLS CAPABLE OF SETBACK TO 50°F (HEAT) & 65°F (COOL).
- ALL THERMOSTATS IN GUEST COMMON AREAS SHALL INCLUDE LOOK-ALIKE CLEAR PLASTIC THERMOSTAT GUARD.
- PAINT INSIDE OF ALL RETURN GRILLE BLACK.
- ELECTRICAL CONTRACTOR SHOULD WIRE THE DUCT MOUNTED SMOKE DAMPER.
- EACH GUEST ROOM EXHAUST WILL HAVE 4" ROUND DUCT CONNECTED IN SHAFT TO MAIN EXHAUST DUCTS.
- 4" OUTSIDE AIR DUCT TO GUESTROOMS TO BE 36 GAUGE (0.55 MM) STEEL IN THICKNESS.
- 4" EXHAUST AIR DUCT FROM GUESTROOM TOILET TO BE 36 GAUGE (0.55 MM) STEEL IN THICKNESS.
- FIBERGLASS DUCT LINER IS NOT ALLOWED. DUCTS SHOULD BE LINED WITH CLOSED-CELL ELASTOMERIC INSULATION.
- MECHANICAL CONTRACTOR SHALL REVIEW LOCAL BUILDING CODE AND SATISFY STATUTES FOR PLACEMENT OF CO2 SENSORS AND COORDINATE WITH ECR IF THERE ARE ANY DISCREPANCIES SHOWN ON PLAN.
- COMBINATION OF CO SMOKE DETECTORS WILL BE USED AT ALL SMOKE DETECTOR LOCATION. REFER ELECTRICAL DRAWING FOR CO SMOKE DETECTOR LOCATION.
- CONTRACTOR CAN USE DETAIL NO. 16 & 19 ON SHEET M-102 TO ELIMINATE FIRE DAMPERS IN PATED WALLS/SHAFTS. CONTRACTOR TO CONFIRM WITH OWNER.

KEY NOTES:

- EXHAUST WILL BE EXTENDED AT LEAST 22" VERTICALLY IN EXHAUST RISER REFER TO REVEAL.
- NO OUTDOOR AIR ALLOWED TO BE BROUGHT IN TO ROOM THROUGH PTAC UNITS. FRESH AIR CONTROL ARM TO BE CLOSED. TYPICAL ALL PTAC UNITS.
- ELBOW CONDENSATE DRAIN CONNECT TO NEAREST CONDENSATE RISER. TYPICAL FOR ALL PTAC UNITS UNLESS NOTED OTHERWISE.
- 1-1/4" CONDENSATE RISER UP. SEE UPPER FLOOR PLANS FOR CONTINUATION. TYPICAL FOR ALL PTAC UNITS CONDENSATE DRAINAGE UNLESS NOTED OTHERWISE.
- MECHANICAL CONTRACTOR TO CO-ORDINATE 1" STAT LOCATION AS PER ID.
- ALL GUESTROOM OA DIFFUSERS SHOULD BE AMERICAN ALDES CSR-40 CONSTANT SUPPLY REGISTER WITH INTEGRATED CARP CONSTANT AIRFLOW REGULATOR.
- DRYER EXHAUST FOR LAUNDRY. COORDINATE SIZES & LOCATIONS WITH ACTUAL EQUIPMENT PLAN.
- AHJ/FCU UNITS CONDENSATE CONNECT TO THE NEAREST FLOOR DRAIN.
- 18X18 COMBUSTION AIR INTAKE LOUVER WITH BRD SCREEN AND MOD. REFER DETAIL NO. 12 ON SHEET M-102. CONTRACTOR SHALL CO-ORDINATE WITH THE ARCHITECT AND MANUFACTURER FOR INTAKE AND EXHAUST DUCT INSTALLATION.
- WALL MOUNTED THERMOSTAT TO CONTROL EXHAUST FAN SET TO ENGAGE AT 80°F.
- OPTIONAL CABINET UNIT HEATER, OWNER TO DECIDE IF CUPS ARE REQUIRED.
- POOL EXHAUST FAN EF-11A IS RUN CONTINUOUSLY - EF-11B IS TO BE SWITCHED IN POOL EQUIPMENT ROOM AND RUN UNDER EMERGENCY OR UNUSUAL CONDITIONS.
- AHU TO BE PROVIDED WITH BIPHONETAL ECONOMIZER WITH STANDALONE DRY BULB CONTROLS FIELD INSTALLED BY CONTRACTOR.
- MOD FOR OUTSIDE AIR RETURN AIR & RELIEF AIR SHALL BE INTERLOCKED WITH ECONOMIZER OPERATION. PROVIDE CLASS 1 WATTED MOD.

No.	Issue Date	Project Status

DATE 2016.08.05

DRAWN BY HAB

CHECKED BY GWV

SCALE AS NOTED

PROJECT NO. B4-67-1603

SHEET NAME

FIRST FLOOR
MECHANICAL PLAN

SHEET NO.

M201